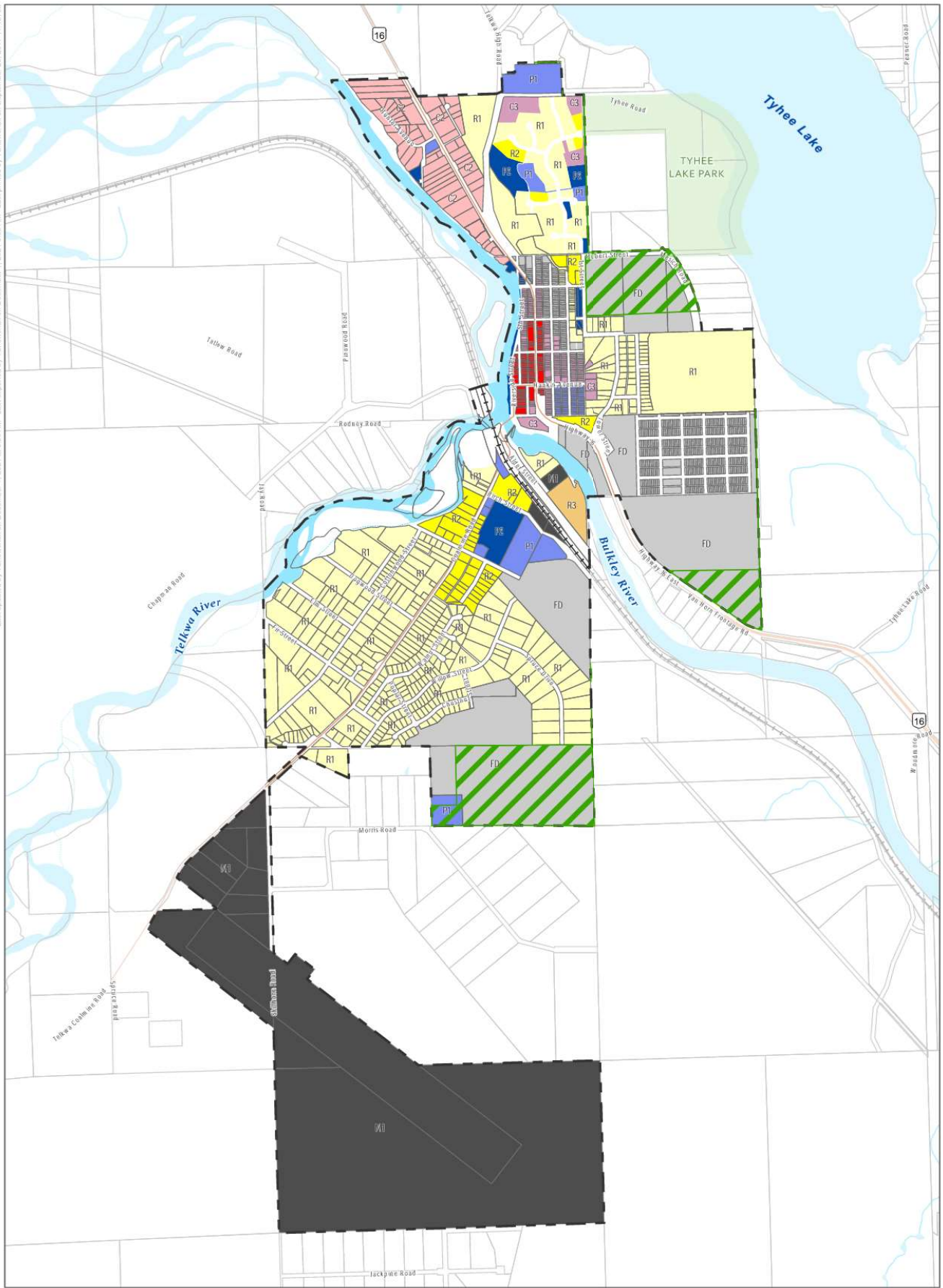


Last updated by TShewchuk on December 1, 2021 at 8:55 AM. Last printed by TShewchuk on September 25, 2017 11:46 AM.



**URBAN SYSTEMS**  
 Project #: 0779.0001.01  
 Author: AK  
 Checked: DH  
 Status: **Draft**  
 Revision: A  
 Date: 2021/12/1

0 200 400 600  
 Metres  
 Scale: 1:17,500  
 (When plotted at 11"x17")  
 Data Sources:  
 - Cadastral provided by ParcelMap BC (November 2021)  
 - Zoning transferred from the drawing provided by the Village of Telkwa  
 - Base data provided Data BC, imagery provided by Google  
 The accuracy & completeness of information shown on this drawing is not guaranteed. It will be the responsibility of the user of the information shown on this drawing to locate & establish the precise location of all existing information shown on site.

- Municipality
- Provincial Park
- Railway
- ALR
- C1 - Downtown Commercial
- C2 - Service Commercial
- C3 - Neighbourhood Commercial
- FD - Future Development
- M1 - Industrial
- P1 - Civic and Institutional
- P2 - Public Park and Recreation
- R1 - Low Density Residential
- R2 - Multiple Unit Residential
- R3 - Manufactured Home Park

**Telkwa**  
 Zoning Map  
 SCHEDULE B