

COMMUNITY & INVESTMENT PROFILE

Telkwa

Where Rivers Meet and Friends Gather



Telkwa

Village of Telkwa
1415 Hankin Avenue
PO Box 220
Telkwa, BC V0J 2X0
www.telkwa.ca
info@telkwa.ca
250-846-5212

www.facebook.com/Village.of.Telkwa
www.facebook.com/Telkwawhereriversmeet
www.instagram.com/villageoftelkwa

♥ **LOVETELKWA.COM**



© 2022 Village of Telkwa

Cover photograph: Marty Clemens

All information was accurate, to the best of our knowledge, at the time of publication.

This document provides links to websites that are not under the control of the Village of Telkwa. We have no control over the nature, content or availability of those sites. The inclusion of any links does not necessarily imply a recommendation nor endorse the views expressed within them.



TABLE OF CONTENTS

Invest in British Columbia.....	1
Witsuwit'en Territory	2
Welcome to the Village of Telkwa.....	3
Telkwa Opportunities	4
Weather	5
Transportation	6
Resource-Based Economy	10
Starting a Business in Telkwa	12
Business Costs.....	16
Business Support & Incentives	18
Housing & Commercial Real Estate.....	20
Utilities	22
Education	24
Health & Wellness.....	25
Community Safety	26
Community Groups & Services	28

Additional reference documents available upon request or visit www.telkwa.ca:

- Business & Community Directory
- Resources for Telkwa Businesses
- Telkwa & Surrounding Area Profile
- Village of Telkwa's Annual Report
- Telkwa Official Community Plan
- Telkwa Zone Map
- Telkwa Visitor Guide
- Telkwa & Area Tourism Profile

British Columbia has one of the most attractive investment climates for business in North America.

Global Access

Located on Canada's Pacific coast places British Columbia (BC) at the commercial crossroads of Asia-Pacific and North America. BC is close to key markets and duty-free access to the United States and Mexico. BC's ports have the shortest sea route from Asia to North America.

Strong Economic Fundamentals

With market opportunities associated with major, long-term projects, especially in Northern British Columbia.

Competitive Business Costs

The cost of doing business in BC can be lower than in other provinces in Canada or the United States. BC's corporate tax rates and the cost of labour, power and facilities provides competitive operating costs.

Growing Labour Supply

BC has a growing labour pool, with highly educated, multi-lingual and a motivated workforce. Telkwa's population has a high percentage of residents with an apprenticeship, trades certificate, diploma or college or university degree compared to other municipalities in Northern BC.

Welcoming Communities

BC encourages new manufacturing and services investments.

Financial Incentives

Northern Development Initiative Trust (NDIT) offer programs aimed at business development, economic infrastructure and job creation in Northern BC.

Visit: www.northerndevlopment.bc.ca

Quality of Live

The quality of life in BC draws and retains skilled and creative people. BC's quality of life is world-renowned and makes it easier for businesses in BC to find and retain the right employees.

For more information on why to invest in BC, visit: www.britishcolombia.ca/invest



Witsuwit'en Territory

The Bulkley Valley is on the traditional territory of the Witsuwit'en people, a Carrier people of the Athabaskan language, who have lived in this vast and bountiful river valley for thousands of years. Their rich culture can be seen and heard throughout the valley, the land that they have known and loved longer than memory can recount.

Witsuwit'en ancestors knew this great watershed as "*Widzin Kwah*", referring to a body of water larger than a stream, now known as the Bulkley River. This area has only been known as the Bulkley Valley in recent history, about 150 years. The story of this beautiful valley is much older, spanning the thousands of generations that it was inhabited by "*Niwhts'ide'nī*", the Witsuwit'en ancestors. Since time immemorial, this place has been called "*yin tah*", a Witsuwit'en expression meaning "earth" or "land", but more specifically "territory."

The name Witsuwit'en can be roughly translated as "People of the lower hills". The territory of the Witsuwit'en Nation extends from the village of Hagwilget in the New Hazelton area in the west to Burns Lake in the east. From Witset (formerly Moricetown) in the north it stretches to the Ootsa Lake area in the south. Within this expansive territory there are six Witsuwit'en communities, namely: Hagwilget, Witset, Broman Lake, Burns Lake, Skin Tyee and Nee Tah Buhn, in addition to the communities of Smithers, Telkwa, Houston and Burns Lake.

Central to the Witsuwit'en culture is their traditional system of governance based upon five clans: Gitdumden (Wolf/Bear), Laksamshu (Fireweed), Tsayu (Beaver), Gil_seyhu (Big Frog) and Laksilyu (Small Frog). Every clan is divided into houses with each house comprised of a sort of extended family. There are thirteen Witsuwit'en houses. Each house has a hereditary chief (the Chief's name is passed on in the line for perpetuity). Usually there are also Wing Chiefs (Sub Chiefs) for each house.

Every Witsuwit'en individual is born in a Clan and a House based on matrilineal descent (ie. through the mother's heritage). The entire Witsuwit'en system is based upon mutual support and long-term relationships.

Witsuwit'en versus Wet'suwet'en

The Office of the Wet'suwet'en has used "Wet'suwet'en" since the beginning of the land claims. For all other purposes, the correct spelling is Witsuwit'en, as per the words written using the sounds available in the English alphabet.

For more information, visit: www.wetsuweten.com

Welcome to the Village of Telkwa

We would like to acknowledge that the picturesque, historic Village of Telkwa is located on the traditional territory of the Gitdumden Clan of the Witsuwit'en people.

Location

Telkwa is nestled in the Bulkley Valley in the northwest central interior of BC, halfway between Prince Rupert and Prince George, 15 km southeast of Smithers, which is the main service centre of the Valley. The Village of Telkwa lies at the confluence of the Telkwa and Bulkley Rivers, surrounded by the Telkwa and Bulkley Ranges of the Hazelton Mountains to the west, and to the east, the Babine Range of the Skeena Mountains.

The Bulkley Valley consists of the communities of Houston, Telkwa, Smithers and Witset (formerly Morristown).

History

It was in 1906 that surveyors first laid out the town site of Telkwa, but prospectors had already been mining in the area for quite a few years. The first townsite, Aldermere, was originally established on the bluff above the Bulkley River, located on the Telegraph Trail system, and was a central restocking spot for prospectors following the call of the Gold Rush. As the Grand Trunk Pacific Railway began constructing the western section of their railway in 1907, many businesses and settlers began to move down the hill to the present site of Telkwa to be closer to the anticipated railway and an easier access to water. Today, over 100 years later, the community of Telkwa continues to be called home by its residents.

An extensive walking trail system winds through the original townsite of Aldermere and embraces Telkwa's parks and historical buildings, including the restored 1910 St. Stephen's Anglican Church and the Telkwa Museum. Many of Telkwa's historical buildings, including the library, remain as testaments to our past and can be seen with a self-guided walking tour.

Recreation

Telkwa's spectacular rural, natural setting offers easy access to extensive year-round outdoor activities. Local sightseeing and adventure tour operators offer various organized packages from world-class hunting, sport fishing and flight charters. Locals and visitors enjoy hiking, cycling, canoeing, tubing, rafting, kayaking, paddle-boarding and bird watching.

The adventures continue in the winter with phenomenal snowmobiling, Nordic skiing, snowshoeing, skating, ice-fishing and downhill skiing at neighbouring mountains.

The Corporation of the Village of Telkwa's Mission is to serve the community through smart growth, community involvement and the creation of partnerships to realize its vision of a healthy, friendly, diverse and thriving community.



Telkwa Opportunities

The Village of Telkwa (the Village) is working towards taking advantage of the opportunities around mining, green energy and tourism as a means of diversifying our economy. Telkwa has lower land costs, competitive tax rates, various business support programs, and transportation routes for new business prospects. The Village of Telkwa strives to improve the lifestyle, services and opportunities to our businesses, residents and visitors by:

- Maintaining a healthy environment and economic conditions which allow for businesses and individuals to flourish and maximize their potential;
- Continuing to improve the sustainability and economic outlook of our community;
- Providing positive and progressive executive and administrative leadership from an open and responsible Council and Administration.

Whether you are looking to set down roots, invest, or stay for a short period of time, Telkwa offers a variety of housing options on larger lots and maintains a high quality of life for its residents including:

- A friendly community built on pride in its people;
- Providing residents with a secure place to live, work and raise a family;
- Outdoor recreation opportunities in the Bulkley Valley that are world-class;
- Clean air and clean water.

Telkwa continues to see a slow, steady growth in population and is a friendly, safe and family oriented community, offering a relaxed lifestyle, which is attractive to potential residents. Telkwa is a short commute to our neighbouring communities of Smithers and Houston for additional work, retail and recreational activities.

Numerous business services are in demand to serve the Bulkley Valley, its residents, visitors and resource community alike. The Village of Telkwa encourages businesses, entrepreneurs, health, retail, service and food sectors to establish themselves in Telkwa and benefit from the buying power of local residents and visitors alike.

With existing prime commercial space, as well as the option to expand retail and home-based businesses, Telkwa is open for business and eager to work with potential investors. We encourage you to consider investing in our community and look forward to working with you to explore opportunities. If you have any questions, or would like additional information, please feel free to contact the Village of Telkwa's Economic Development Officer.

BC Government's Community Information Tool

The BC Government's "Community Information Tool" offers insight into communities across BC with integrated socioeconomic data, infrastructure and community assets data. The Tool supports community, regional and province-wide planning, which is essential to building thriving, healthy communities. Visit: <https://communityinformationtool.gov.bc.ca>.

Weather

Weather is recorded at the Smithers Regional Airport.

The climate is relatively warmer and drier than the coastal areas to the west. Summers are warm, with cool night time temperatures. Whereas winters are cold and cloudy, but highly variable with some lovely sunny days.

As per 2020 Environment Canada data:



Annual Snowfall
183 cm



Winter Temps
- 33 °C (low)



Summer Temps
+30 °C (high)



Daylight Hours
1,620.7



Annual Rainfall
444 mm



Photo credit: Dodd's Photography

Transportation

A sophisticated transportation network provides access to key markets. The Town of Smithers is located 15 km to the west of Telkwa, and the City of Prince George 356 km to the east.



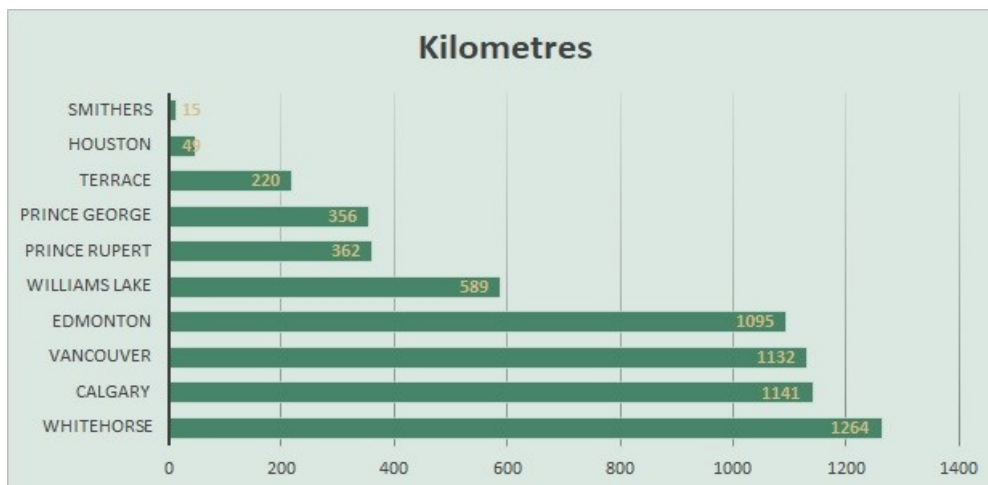
For more information on regional transportation, please visit: www.telkwa.ca/transportation.

By Road

Highway 16 (Yellowhead Highway) originates in Manitoba and extends to Prince Rupert on the West Coast. Highway 16 passes through the Village of Telkwa, providing an excellent truck transportation infrastructure for the movement of supplies. Highway 16 is well maintained and “all-weather”, permitting efficient travel and easy access by vehicle.

Telkwa shares the transportation amenities found in Smithers, including:

- Taxi / airport shuttle service;
- BC Transit passenger bus service;
- BC Bus North: intercity bus service between Prince Rupert and Prince George;
- Northern Health Connections: for patients needing to travel for out-of-town appointments;
- Vehicle and truck rental services;
- Various freight transportation companies: services include household moving, refrigeration, container hauling, cross-border, etc.



By Rail

Intermodal Transportation Services

Telkwa is located on the Canadian National Rail line, linking Prince Rupert and the North American marketplace. CN Rail has a railyard and station in Smithers, 15 km west of Telkwa, and in Houston, 49 km east of Telkwa. CN’s network in BC and the Prairies provides single line access from mines, fields and forests to the Port of Prince Rupert.

Visit: www.cn.ca

Passenger Rail Service

Passenger Rail transport includes VIA Rail from Prince Rupert to Jasper, with stops in many communities along the route, including Smithers.

Visit: www.viarail.ca

By Air

Smithers Regional Airport (CYVD)

The Smithers Regional Airport is 20 km west of Telkwa / 5 km north of the Town of Smithers. Passenger, charter and cargo services are readily available.

Visit: www.smithers.ca/airport

Prince George Airport (YXS)

Prince George Airport is an international airport located 365 km east of Telkwa, travelling on Highway 16. Passenger, charter and cargo services are readily available.

Visit: www.pgairport.ca

Northwest Regional Airport (YXT)

The Northwest Regional Airport (Terrace-Kitimat) is 221 km west of Telkwa, travelling on Highway 16, then turning south onto Highway 37 in Terrace. Passenger, charter and cargo services are readily available.

Visit: www.yxt.ca

By Sea

Port of Prince Rupert

The Port of Prince Rupert, located 362 km west of Telkwa, is a global gateway, exporting bulk commodities from Canada to destinations all over the world. This is the second largest port on the West Coast of BC and is the deepest natural harbour in North America, remaining ice-free year-round. The Port of Prince Rupert accommodates the largest vessels in the shipping route and is the closest North American West Coast port to Asia, 500 nautical miles closer than other ports in the Pacific Northwest.

The Port of Prince Rupert has a direct, single-line connection to the extensive reach of CN's continental rail network.

Visit: www.rupertport.com

Customs Port of Entry

Canada Border Services Agency's nearest branches to Telkwa are in Prince Rupert or Prince George Airport.

Visit: www.cbsa-asfc.gc.ca

Northern BC Export Profile

Northern BC's economy has been built on the strengths of its ability to export products to Canadian, US and international markets, primarily from commodities and manufactured goods associated with the region's natural resource sector.

The Northern BC Export Profile is a partnership between the Prince Rupert Port Authority, Northern Development Initiative Trust and the BC Ministry of Transportation and Infrastructure.

The website provides a comprehensive understanding of exports, departing from Northern BC, including the nature, valuation, quantity, origin point, destination market and mode of transportation. The profile has been broken into 4 subregions, namely: Northwest, Northeast, North Central, and the Cariboo-Chilcotin Lillooet; as well as into 5 primary economic sectors: forestry, mining, petrochemicals, agriculture, and other manufacturing.

The baseline data and information from the Northern BC Export Profile is intended to be used to increase awareness and education about the Northern BC economy and to support the collaborative economic development efforts and initiatives that will foster growth from the region.


Visit: www.NorthernBcExportProfile.com

Filters


Group by Region

Group by Regional District

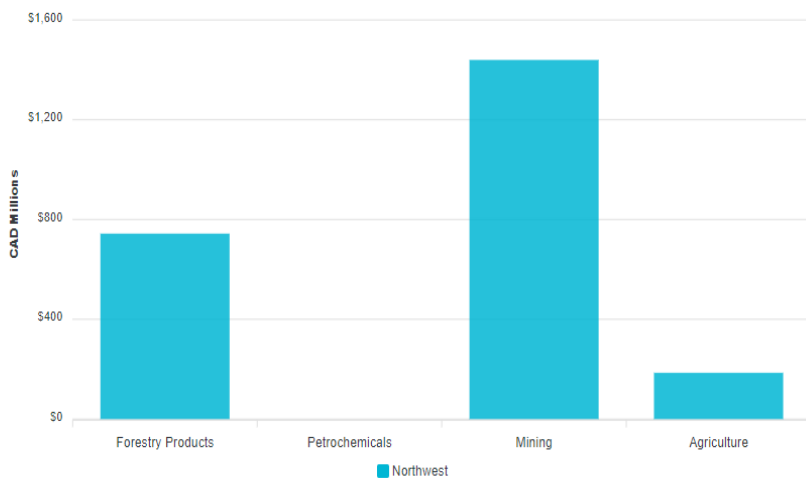
Select region



Northwest



**Total Value of Production by Commodity Group
Northwest - 2019**



This chart shows the total value of production by commodity group that was produced in Northwest during the period.

Resource-Based Economy

The forest industry has played a primary role in the development of Telkwa, followed closely by mining, agriculture and dairy. Mining has always been an integral part of Telkwa's history and exploration is still active in the region. Agriculture, forestry and tourism remain the key economic activities in the Telkwa and the surrounding area of the Bulkley Valley.

Agriculture

The Bulkley Valley is renowned for its agricultural history because of the fertile valley soil. The first pasteurising plant in the Bulkley Valley was opened in Telkwa in 1939, where butter was shipped by rail east to Vanderhoof and west to Prince Rupert.

Dairy farming, cattle ranching, grain and vegetable growing are important activities in the area, where land, business and organizations support diverse agriculture activities. Locally grown food products is a growing movement in the region.

Connecting Consumers & Producers

The Regional District of Bulkley-Nechako (RDBN) manages the Producer Directory, where one can source local products from communities in the Bulkley-Nechako region. Producers can also list their products on the Producer Directory by contacting the RDBN directly.

Visit: <https://ccap.rdbn.bc.ca>

Forestry

Forestry is still one of the most significant economic drivers in BC. The Bulkley Timber Supply Area (TSA) covers approximately 736,000 hectares and includes the communities of Smithers, Telkwa, Witset and Fort Babine. The TSA is administered by the Skeena Stikine Natural Resource District.

Visit: www.for.gov.bc.ca/dss

The Bulkley TSA's allowable annual cut (AAC) is 852,000 cubic metres. A new AAC is anticipated to be set in 2024.

The forest industry began in Telkwa with a large sawmill that operated until the 1970s when it was purchased and moved to Smithers by Pacific Inland Resources (PIR). West Fraser purchased PIR in 1975.

Telkwa has a number of small wood manufacturers in the area. These value-added manufacturing businesses are common to the entrepreneurial spirit in the Bulkley Valley.

Reforestation Nurseries

Two reforestation nurseries exist on the outskirts of Telkwa, in the RDBN. Woodmere Nursery and PRT Summit grow seedlings for the forest industry.

Mining

Telkwa has rich coal reserves and a history of coal mining dating back to 1901, when coal was first discovered at Goathorn Creek, about 8 km south of the Village of Telkwa. For more than 100 years, coal mining has been one of the major industries in the Telkwa area. Coal coming from the Telkwa area was known to be “some of the hottest in Canada”.

The Telkwa coalfield extends for approximately 50 kms along the Bulkley River, from north of the Town of Smithers to south of the Village of Telkwa. The Telkwa coalfield produced approximately 433,000 tons of thermal coal in the period 1918 to 1970. The Telkwa coalfield is estimated to contain approximately 0.13 trillion cubic feet of natural gas.

Telkwa Coal Limited is proposing to develop the Tenas Project, a steelmaking (or metallurgical) coal mine 7 km southwest of Telkwa. The Tenas Project entered into the BC Environmental Assessment process in November 2019. The project will produce approximately 775,000 to 825,000 tonnes of steelmaking coal annually, with a mine life of about 25 years, including construction, operations and reclamation phases of the project.

For more information on Telkwa Coal Limited, visit: www.telkwacoal.com

Tourism

The pristine rivers in Telkwa attract water sport adventures and are excellent for fishing, canoeing, kayaking, tubing or rafting. Bordering the Village of Telkwa is the Tyhee Lake Provincial Park, which conveniently offers a campground, swimming, hiking, walking, bird viewing, a boat launch, paddle board rentals and a picnic site during the summer.

The Telkwa Pass is a superb ATV route, which was awarded bronze for “most challenging ATV area” and silver for “most scenic ATV area” by RidersWest Magazine in 2012. Snowmobiling, cross-country skiing and snowshoeing are welcome activities when the snow falls. When the conditions are right, winter ice skating on the expansive Tyhee Lake is a must!

Telkwa has an extensive trail system featuring diverse river, marsh and aspen forest ecosystems. A self-guided walking tour lets you explore the Village’s history and envision what you might have seen in Telkwa over 100 years ago.

The Telkwa Museum is open during the summer months and provides Visitor Information services. Visit www.telkwa.ca/visit for a list of accommodation providers, food outlets and activities.

The adventure extends all around Telkwa as the Bulkley Valley offers exceptional recreational activities for every season. Visit: www.tourismsmithers.com

Excellent opportunities exist for growth, especially in the adventure tourism sector. Telkwa’s unique heritage character offers opportunity to expand cultural and heritage tourism.

Starting a Business in Telkwa

Telkwa offers unique business opportunities and advantages, a supportive entrepreneurial climate and an exceptional quality of life. Telkwa has:

- A proactive and innovative Municipal Council, supportive of expansion and new opportunities;
- A regional government committed to enhancing business opportunities;
- A strong drive for growth and expansion;
- A skilled, diverse and entrepreneurial workforce;
- A sophisticated transportation network for access to key markets;
- Low operating costs;
- Reasonably priced land;
- Local business support and incentives;
- Lower tax rates;
- A unique combination of business and lifestyle opportunities; and
- High-speed broadband internet, with a drive towards fibre-optic expansion.

Incorporated in 1952, the Village of Telkwa has a total area of 941 acres. Telkwa has a positive business climate and a propensity towards entrepreneurship as small home-based businesses continue to develop.

Opening a new business is an exciting process that requires careful planning. Before opening your business in the Village of Telkwa, there are a few steps to follow to ensure the your business complies with the Village's Bylaws (see pages to follow). In addition, the Village of Telkwa Economic Development Officer is available to provide further details and answer any questions that you may have regarding business start-ups in Telkwa.



Olivia's Café opened in March 2020. Olivia won the Young Entrepreneur of the Year Award in 2021 at the annual Smithers District Chamber of Commerce Community & Business Awards.

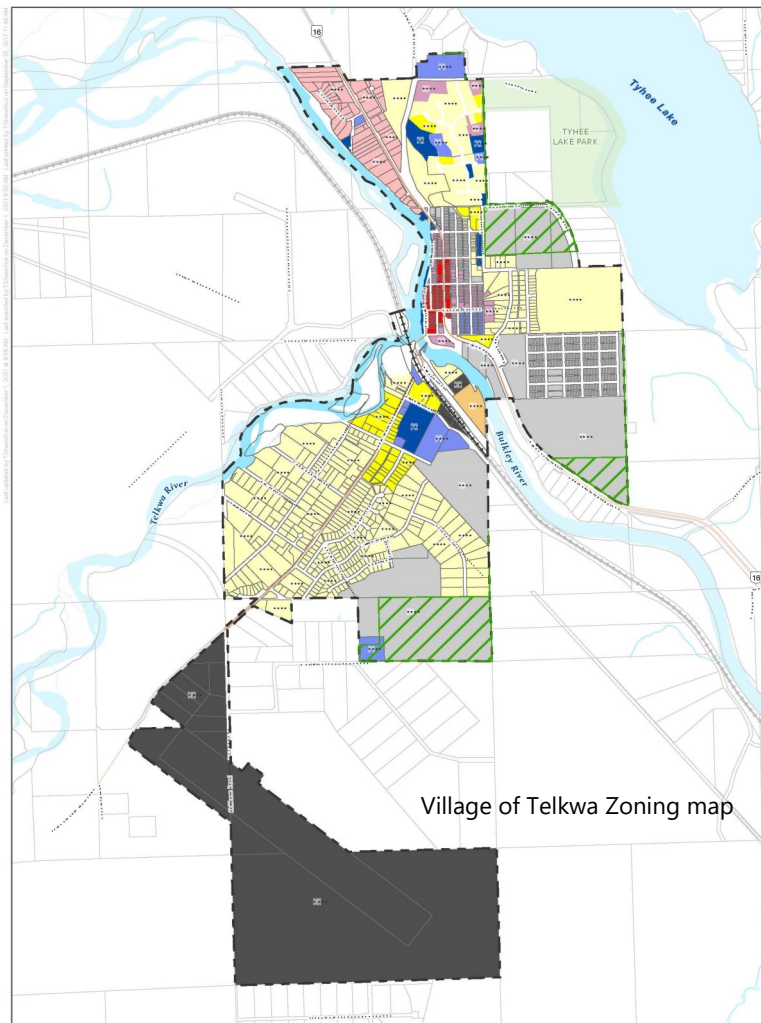
Selecting a Location

Selecting the location is an important step in order to determine if the location is appropriate for the business. The location of a business must comply with the local zoning regulations, as well as the BC Building Codes. Before confirming a lease or purchase agreement, it is important to ensure the location of the business is suitable. This is also applicable to home-based businesses.

Should your proposed building, structure or zoning not align with the Village of Telkwa Bylaws, you can apply for a Development Variance. Visit www.telkwa.ca/planning.

For further information on the Village of Telkwa's Bylaws, zoning and Official Community Plan, please contact the Telkwa municipal office directly, or visit www.telkwa.civicweb.net/portal.

Properties located on the outskirts of the Village of Telkwa's municipal boundary fall under the Regional District of Bulkley Nechako zoning Bylaw for Electoral Area A. Please visit www.rdbn.bc.ca.



Building, Plumbing & Fire Code

It is important to ensure that the building's composition and current major occupancy classification in relation to the proposed business conforms to the BC Building Code, the Village of Telkwa bylaws and the Local Government Act. The Regional District of Bulkley-Nechako Building Inspector, with the assistance of the Village of Telkwa Fire Chief, may conduct a walk through.

A formal report will be prepared prescribing any changes that may be required by the BC Building Code. This report, along with any other documentation required by BC Building Codes and the Village's bylaws, must be submitted upon request of the Building Official.

Please contact the Telkwa municipal office for any questions regarding planning and development.

Building & Signage Permits

Before you construct, alter, repair or demolish a building or structure in the Village of Telkwa, please review the Building Permit Application Guide listed under www.telkwa.ca/planning.

All signs erected, placed, displayed, altered or moved must be in conformance with the Village of Telkwa Sign Bylaw.

Other Permits & Licensing

The [Liquor and Cannabis Regulation Branch \(LCRB\)](#) oversees liquor and non-medical cannabis regulations. These are specific rules and laws that govern BC's private retail sale of liquor and non-medical cannabis. The LCRB also supervises the regulation and licensing of establishments and events, including:

- Restaurants, bars and pubs
- Liquor manufacturers
- Liquor retail stores
- Special events involving liquor
- Private non-medical cannabis retail stores
- Non-medical cannabis marketing

For more information, please visit: www2.gov.bc.ca

[Northern Health \(NH\) Operating Permit](#)

A NH operating permit is required for both food facilities and personal services:

- Food facility: opening a new food facility, changing ownership or renovating an existing food facility. This includes: restaurants, stores, processing, food vendors, etc.
- Personal services: opening a new personal service facility or requesting a change or modification to an existing facility. This includes: salons, spas, esthetics, tattoo studios, etc.

For more information, please visit: www.northernhealth.ca/services/environmental-health

Apply for a Business Licence

Any person owning or operating a business within the Village of Telkwa is required to hold a valid business licence, as regulated by the Village of Telkwa Business Licence Bylaw. This includes businesses that are located out of town, but operate within the Village, seasonal, mobile and home-based businesses.

Once a Business Licence application has been approved, the applicant will be asked to pay an annual business licence fee. The business licence is issued for one year and terminates on December 31st. Renewal notices are sent out in early December each year.

For more information, please visit: www.telkwa.ca/business-licences

Business & Community Directory

Business, community and sports groups and clubs are listed on the Telkwa Business and Community Directory. Printed copies of the directory can be picked up upon request at the Telkwa municipal office.

Visit: www.telkwa.ca/businesses



Midway Service is one of Telkwa's oldest and most historic businesses, which opened in 1977 and has been family-owned and operated ever since.



The Inn at the Creamery is a historical building built in 1939 that has been completely restored to its former glory. The Inn at the Creamery is now a lodge and café.

Business Costs

Telkwa is a great place to work, invest and live in. Competitive labour costs, regional incentives and affordable real estate, provide for a positive environment for your business to grow. Some of the employee costs you will need to budget for when opening your business in BC are listed below:

Paid Holidays

Employees get paid for the following Statutory Holidays, if they qualify: Easter Sunday, Easter Monday, Boxing Day and National Day for Truth and Reconciliation are not Statutory Holidays in BC.

New Year's Day	Family Day
Good Friday	Victoria Day
Canada Day	BC Day
Labour Day	Thanksgiving Day
Remembrance Day	Christmas Day

Minimum Wage and Overtime

Minimum wage applies regardless of how employees are paid (hourly, salary, commission or incentive basis). The current minimum wage can be found on the BC Government's website by searching "getting paid for work".

Employees are paid time-and-a-half for any time worked over eight hours in a day, up to 12 hours – even if the employee does not work more than 40 hours in a week. Employees are paid double time for any time worked over 12 hours during a day.

Worker's Compensation

WorkSafeBC is a provincial agency that collects premiums from businesses to cover the costs of work-related injuries.

Employer Service Centre: 1-888-922-2768
Visit: www.WorkSafeBC.com

Mandatory Benefits

Canada has two federal insurance plans, which employers and employees jointly pay into. There is also a statutory deduction for Worker's Compensation.

- Canada Pension Plan (CPP): This plan ensures Canadians have a basic income for retirement. Employers contribute 5.25% of employee wage to a maximum annual contribution.
- Employer Contribution Employment Insurance (EI): EI ensures that workers have income available to them should they become unemployed. Employers pay 1.4 times the amount of the employee's premiums and stop deducting premiums when the employee's maximum insurable earnings or the maximum employee premium for the year is reached.

For more information, please visit:
www.canada.ca/en/revenue-agency.html

Made-In-BC Permanent Paid Sick Leave

Effective January 1, 2022, the BC Government established a permanent paid sick leave of five days per year for all workers covered under the Employment Standards Act.

Visit: www2.gov.bc.ca

Starting a Business?

Small Business BC offer a range of business resources and tools for those starting a business.

Visit: www.smallbusinessbc.ca

Federal and Provincial Taxes

Federal Tax Information

Canada has a five percent (5 %) value-added tax called the Goods and Services Tax (GST), which is administered by the Canada Revenue Agency (CRA). GST is fully recoverable for all business inputs. Businesses with annual revenues from taxable supplies of goods and services of over \$30,000 must register for GST.

Visit: www.canada.ca/en/services/taxes.html

Provincial Tax Information

British Columbia has a seven percent (7%) Provincial Sales Tax (PST). Various business inputs are exempt from the tax, including production of machinery and equipment, software development, construction labour and various materials.

Visit: www.gov.bc.ca/gov/content/taxes/sales-taxes

Village of Telkwa Property Taxes

Property taxes are calculated through a joint provincial / municipal process. BC Assessment determines the value of your property and the Village of Telkwa Council determines the tax rate for the community. The property value and tax rate are multiplied to determine the taxes owing.

Visit: www.telkwa.ca/taxes

Corporate Income Tax

Business taxes are levied by federal, provincial and municipal levels of government. The corporate tax environment in British Columbia can be very favourable, especially for manufacturing, processing and research-intensive businesses.

British Columbia's general corporate income tax is only twelve percent (12 %). When combined with the federal rate, British Columbia businesses pay a combined general corporate income tax rate of twenty-seven percent (27%) - among the lowest in the G7.

Personal Income Tax

British Columbia has the lowest provincial personal income taxes in Canada for individuals earning up to \$125,000 per annum.

Visit: www2.gov.bc.ca

Business Support & Incentives

The Provincial Government, Northern BC and the Village of Telkwa have a number of programs to support new and existing businesses. This includes programs to beautify storefronts, encourage residents to shop local, and ensure you get the resources your business needs to thrive. Incentives are also available to entrepreneurs to start their new venture in Telkwa.

VILLAGE OF TELKWA

Economic Development/Business Liaison

The Village of Telkwa provides a number of services to support our economy, businesses and entrepreneurs.

Visit: www.telkwa.ca

Business Façade Improvement Program

Provides monetary assistance as an incentive to improve the physical appearance of the business façade, including signage.

Visit: www.telkwa.ca

LOCAL BUSINESS SUPPORT

Community Futures Nadina

Provides support and financial resources to small and medium-sized businesses.

3848 3rd Avenue, Smithers

Visit: www.cfnadina.ca

Smithers District Chamber of Commerce

Represents and advocates for the business community.

1411 Court Street, Smithers

Visit: www.smitherschamber.com

REGIONAL SUPPORT OFFICES

Northern Development Initiative Trust

NDIT offer funding and rebates for business development programs.

301-1268 Fifth Avenue, Prince George

Visit: www.northerndevelopment.bc.ca

Northern BC Tourism Association

Facilitates the development of strong tourism industry in Northern BC.

1274 Fifth Avenue, Prince George

Visit: www.travelnbc.com

Small Business BC

Provide business advise, educational services and resources to entrepreneurs.

550-555 W. 12th Avenue, Vancouver

Visit: www.smallbusinessbc.ca

WeBC

Provide support for women business owners to start, develop, lead and sell businesses.

1726 Dolphin Avenue, Kelowna

Visit: www.we-bc.ca

PROVINCIAL SUPPORT

Trade & Invest BC

Leverages BC's extensive trade and investment experience to help organizations and investors find success doing business in BC.

730-999 Canada Place, Vancouver

Visit: www.britishcolumbia.ca



Employment Services

WorkBC Centre

3851 1st Avenue, Smithers

Visit: www.workbc.ca

Financial Institutions

The following banking institutions are present in Smithers:

Bulkley Valley Credit Union

3894 1st Avenue

Visit: www.bvcu.com

RBC Royal Bank

1106 Main Street

Visit: www.rbcroyalbank.com

CIBC

3836 4th Avenue

Visit: www.cibc.com

Scotiabank

3664 Frontage Road, Highway 16

Visit: www.scotiabank.com

Insurance Providers

The following insurance companies located in Smithers provide:

- Business insurance
- House and tenant insurance
- ICBC and private auto and recreational vehicle insurance

Bulkley Valley Insurance Services Ltd.

1139 Main Street

Visit: www.bvis.ca

Western Financial Group Inc.

3895 1st Avenue

Visit: www.westernfinancialgroup.ca



The Village of Telkwa is located at the confluence of two world-class salmon-bearing rivers, namely the Bulkley River and Telkwa River.

Housing & Commercial Real-Estate

Whether you are looking to build a business or move to a new community, Telkwa has existing prime commercial space, as well as the option to expand retail and home-based businesses.

The Village of Telkwa recognizes the important role housing plays in being able to attract and retain residents, as well as to maximize local economic development opportunities. The Village has made headway to address important foundational components to prime future housing growth potential. This includes water system upgrades, asset management planning, floodplain mitigation planning and updated development bylaws.

The Village of Telkwa completed a Housing Needs Report in 2020 and is working towards achieving Council's strategic priorities.

For access to the Telkwa Housing Needs Report, visit: www.telkwa.civicweb.net/Portal

BC Northern Real Estate Board

BC Northern Real Estate Board calculates the Housing Affordability Indicator (HAI), which can be used as a tool to measure the required percentage of median family income necessary to cover the average costs of home ownership each year.

Visit: www.bcnreb.bc.ca

Statistics Canada

Statistics Canada collects and releases census data every five years, which includes average and median incomes in communities across Canada.

Visit: www.statcan.gc.ca/en/subjects-start/housing

Real Estate Contacts

The Bulkley Valley has two realtors who service both residential and commercial properties:

Calderwood Realty

1175 Main Street, Smithers

Visit: www.calderwoodrealty.com

Re/Max Bulkley Valley

3568 Frontage Road, Highway 16, Smithers

Visit: www.smithersbcremax.ca



Commercial & Industrial Property

Should you be looking to buy a business in BC, or you are ready to sell or retire?

Venture Connect

Venture specializes in listing BC businesses for sale, and also offers support when buying or selling a BC business.

Visit: www.ventureconnect.ca

Multiple Listing Service (MLS)

MLS is Canada's real estate platform displaying residential and commercial listings from realtors across the country.

Visit: www.realtor.ca

Provincial Investment Tool

The Province of BC created a "Community Investment Opportunities" website dedicated to connecting investors with opportunities in communities across BC that meet your site selection criteria. One can search for industrial, commercial and agricultural properties by size, site servicing, labour force and more.

Visit: <https://communityinformationtool.gov.bc.ca/investmentopportunities/home>

Crown Land

Crown land is land that is owned by the Province of BC. The Province is the steward of the land and can lease, licence and sell Crown land for a variety of purposes, including residential, commercial, industrial, agricultural, tourism and recreational purposes.

Front Counter BC

Visit: <https://portal.nrs.gov.bc.ca>



Castle-Bulkley Valley Home Centre won the Canadian 2021 Outstanding Retailer Award for a building supply or home centre under 15,000 square feet in size.

Utilities

The Village of Telkwa supplies water, sewer and waste management services, while electricity communications and natural gas are available through various providers.

Electricity

BC Hydro is a Crown corporation that supplies electricity for residents and businesses in the Bulkley Valley. BC's electricity rates are amongst the lowest in North America. BC Hydro is a regulated utility and the electricity rates depend on three factors: demand, supplied voltage and customer load.

Tel: 1-800-BCHYDRO (1-800-224-9376)
Visit: www.bchydro.com

Communications

Wireless and fixed-line telephone and broadband services are available through several providers.

INTERNET

CityWest

Visit: www.citywest.ca

Cybernet

Visit: www.cybernetcom.ca

Telus

Visit: www.telus.com

Xplornet

Visit: www.xplornet.com

TELEPHONE

CityWest

Visit: www.citywest.ca

Telus

Visit: www.telus.com

Natural Gas

Pacific Northern Gas (PNG), which is a wholly owned subsidiary of TriSummit Utilities Inc., delivers natural gas to homes and businesses in the Bulkley Valley. PNG's Smart Energy Programs offer rebates and savings to residential homes and businesses, leading to better uses of energy and lowering the carbon footprint.

Tel: 1-800-667-2297
Visit: www.png.ca

Waste Management

Garbage Services

The Village provides weekly residential and commercial garbage pick-up services within the municipal boundary. Only mandated garbage carts will be picked up by the Village.

Curbside Recycling

The Village provides curbside recycling pick-up services once a week for certain recyclable materials. Please visit the Village website for more information on garbage and curbside recycling services: www.telkwa.ca.

Waste Transfer Station

The Smithers-Telkwa Transfer Station is operated by the Regional District of Bulkley-Nechako. Recyclable materials dropped off at this location must be sorted and deposited into the correct areas. Business waste management infrastructure and policies vary depending on the characteristic of the operation.

The transfer station is located just off Highway 16 at 6139 Donaldson Road.

Visit: www.rdbn.bc.ca

Water & Sewer

It is the Village's priority to ensure that residents receive a high quality water supply and sanitary sewer services. The Village continues to work on their Asset Management Priorities to upgrade and improve the water supply and sanitary sewer systems.

Water

The Village's potable water system is supplied from the Bulkley River, drawn from the new intake located upstream of the Bulkley River Bridge. The raw water is pumped to the Water Treatment Plant located on Coalmine Road, where it is treated and then pumped into the Village's water distribution system. The Village has two above-ground storage reservoirs located on Trobak Hill (1,600 m³ capacity) and on Morris Hill (900 m³ capacity).

To ensure continued high standards of drinking water quality, the Village sends weekly water samples for bacterial testing and biennial samples for chemical testing.

Sewage

The Village's sanitary sewage collection system consists of about 20 km of sanitary sewer pipes. The Waste Water Treatment Plant is located north west of the Village at the end of Pinewood Road. The Waste Water Treatment Plan is a lagoon system with aerated treatment lagoons and a larger exfiltration lagoon.

Education

Between Telkwa and Smithers, all of your family's educational needs can be served.

The Bulkley Valley School District 54 encompasses the communities of Witset, Smithers, Telkwa, Quick and Houston, and includes five elementary schools and two high schools. High school students commute by bus each day. Coast Mountain College in Smithers is a progressive and growing institute, continually expanding its programs.

CHILD CARE PROVIDERS

Smithers & Area Child Care Resource & Referral Program (CCRR)

CCRR offers information, resources and support for parents and child care providers. They maintain a registry of licenced providers in the Bulkley Valley.

Visit: www.nwcdc.ca/ccrr

ELEMENTARY SCHOOLS

Telkwa Elementary School

1000 Hankin Avenue, Telkwa

Visit: <http://telweb.sd54.bc.ca/>

Grades: K to 7

Muheim Elementary School

3659 3rd Avenue, Smithers

Visit: <http://mmeweb.sd54.bc.ca/>

Grades: K to 7

Walnut Park Elementary School

4092 Mountainview Drive, Smithers

Visit: <http://wpsweb.sd54.bc.ca/>

Grades: K to 7

HIGH SCHOOLS

Smithers Secondary School

4408 3rd Avenue, Smithers

Visit: <http://ssweb.sd54.bc.ca/>

Grades: 8 to 12

ALTERNATIVE EDUCATION

Bulkley Valley Learning Center

3966 2nd Avenue, Smithers

Visit: www.sd54.bc.ca

Grades: 10 to 12

PRIVATE SCHOOLS

Bulkley Valley Christian School

3575 14th Avenue, Smithers

Visit: www.bvcs.ca

Grades: Pre-K to 12

St. Joseph's Catholic School

4054 Broadway Avenue, Smithers

Visit: www.stjosephsschool.ca

Grades: Pre-K to 7

POST-SECONDARY EDUCATION

Coast Mountain College

Visit: www.coastmountaincollege.ca

Location: Smithers, Terrace, Hazelton, Prince Rupert & Haida Gwaii

University of Northern British Columbia

Visit: www2.unbc.ca

Location: Prince George. Regional campuses in Fort St. John, Terrace & Quesnel

College of New Caledonia

Visit: www.cnc.bc.ca

Location: Burns Lake, Fort St. James, Mackenzie, Prince George, Quesnel & Vanderhoof

Health & Wellness

Between Telkwa and Smithers, the Bulkley Valley offers a variety of services to keep you at your peak and take care of your health.

Public Health Insurance

Canadians are fortunate to enjoy public health insurance. In BC, public health insurance is called the Medical Services Plan (MSP). For more information, please visit: www2.gov.bc.ca/gov/content/health/health-drug-coverage/msp

Hospital

The Bulkley Valley District Hospital, located in Smithers, is a 24-bed acute care facility, which provides the following services:

- Emergency / outpatient
- Medical
- Surgery
- Maternity
- Palliative care
- Psychiatric observation unit
- Laboratory
- Radiology: (x-ray, mammography, ultrasound)
- Pediatrics services
- Home and community care
- Community cancer clinic
- Visiting specialists & surgeons

3950 8th Avenue, Smithers
Tel: 250-847-2611

Health Care

There are numerous physicians and some specialists in Smithers, supplemented by visiting specialists in various fields.

Smithers and Telkwa are well served by dentists, denture clinics, optometrists and pharmacies. Both Telkwa and Smithers have physiotherapists and massage therapists.

Please contact the practitioners to enquire who is accepting new patients.



Ridgeline Physiotherapy in Telkwa



Riverside Massage Therapy in Telkwa

Community Safety

Emergency Services

For all emergencies, dial **9-1-1**.

Use this number when you require assistance for police, fire or ambulance. Calling this number is free of charge.

When you call 9-1-1, be prepared to provide the following information:

- Your address and phone number.
- As much information about the emergency as possible.

Emergency Numbers - 24 Hours

For all Emergencies.....	911
BC Crime Stoppers / Tips.....	800-222-8477
Crisis Line - 24/7 (Northern BC).....	888-562-1214
1-800-SUICIDE (BC Wide).....	800-784-2433
Northern Society for Domestic Peace Passage Transition House.....	877-633-9933
Ministry of Children & Family Development Help Line for Children - 24/7	800-663-9122
Poison Control Centre	800-567-8911
Victim Link (multi-lingual).....	800-563-0808

Emergency Alerts

Voyent Alert! Is a communication service used to send alerts to residents and businesses during critical events like fires or floods, as well as relevant day-to-day communications such as snow removal advisories, etc.

Sign up for free through a mobile app.

Visit: www.telkwa.ca/emergency-services

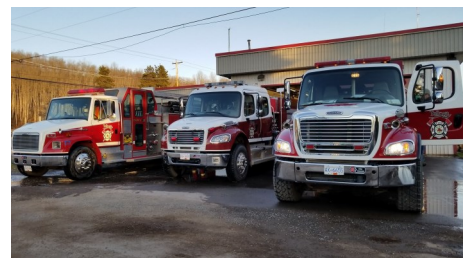
Ambulance Services

The BC Ambulance Service operates out of Smithers and provides public ambulance service for emergencies, paramedic services and medical transportation.

Fire Rescue

The Telkwa Volunteer Fire Department members are trained as firefighters and medical first responders. Their members perform basic swift water and ice rescue. Telkwa Fire consists of one full-time Fire Chief and a group of hardworking volunteers dedicated to keeping their community safe.

Visit: www.telkwafire.com



Community Safety - continued

Police

The Royal Canadian Mounted Police (RCMP) is Canada's national police service. The Smithers RCMP detachment serves Witsset, Smithers, Telkwa and Fort Babine.

3351 Highway 16, Smithers

Non-emergency calls only: 250-847-3233

Bulkley Valley Search & Rescue

Volunteer members are trained in basic search and rescue, wilderness rope rescue, swift water rescue and organized avalanche response.

Visit: www.bvsar.com

Bulkley Emergency Support Services (BESS)

BESS is a community volunteer organization that provides services to residents who have been affected by an emergency or disaster in the Town of Smithers, Village of Telkwa or RDBN.

Visit: www.telkwa.ca/emergency-services

Avalanche Safety & Awareness

Please check the Canadian Avalanche Association bulletin for regional updates if you are heading out into the backcountry: www.avalanche.ca

Backcountry Safety Tips

The Bulkley Valley offers an array of outdoor adventures. Before heading out into the backcountry:

- **Always carry the essentials:** Make sure your equipment is in good working order. Be prepared to stay overnight, even if you are only going for a few hours. It's the unforeseen that usually causes an emergency situation.
- **If you become lost, don't panic:** Stay calm and maintain a positive mental attitude. With adequate preparation, being lost is not a dangerous situation; however, if you panic, you can soon find yourself in trouble. Remember to S.T.O.P (sit, think, observe, plan).
- **Stay sober:** The wilderness is no place for drugs or alcohol as they affect your thinking, coordination and reaction time. Poor decisions are made when under the influence.
- **If possible, do not go alone:** If you do travel into the woods alone, be extra diligent about being prepared, share your trip plans with someone, stick to your plans and use extra caution when making decisions. Being injured and alone in the woods is a dangerous situation.
- **Take a group photo:** Use your cell phone to snap a group photo and email it to your contact person; doing so could be very helpful for searchers should anyone in your group become lost/separated.
- **Remember, it can happen to you:** Accidents are unplanned and happen to everyone. By being prepared, you can make your trip an enjoyable adventure no matter what nature sends your way.

Community Groups & Services

Telkwa & Smithers offer various community, sports and service groups. (T) = located in Telkwa.

Agriculture

Bulkley Valley Farmer's Market
Mid Valley 4-H Club (T)

Arts & Music

Bulkley Valley Folk Music Society
Creative Roots Performing Arts
Music Smithers
Telkwa Book Club (T)
Telkwa Crochet Club (T)

Canine & Equestrian

Grace - Dog Training & Doggie Daycare (T)
Northern Saddle Club

Community & Social Services

Better At Home Program
Bulkley Valley Kinsmen Club (T)
Canadian Red Cross
Dze L K'Ant Friendship Centre
Office of the Wet'suwet'en
Rotary Club of Smithers
Royal Canadian Legion Smithers Branch 63
Smithers Community Services Association
Telkwa & District Seniors Society (T)
Telkwa Senior's Housing Society (T)
The Salvation Army

Outdoor Recreation & Tourism

Bulkley Valley Naturalists
BV Nordic Centre
Hudson Bay Mountain Resort
Smithers Mountain Bike Association
Smithers Visitor Centre / Tourism Smithers
Telkwa Community Garden (T)
Telkwa Museum & Visitor Information (T)

Places of Worship

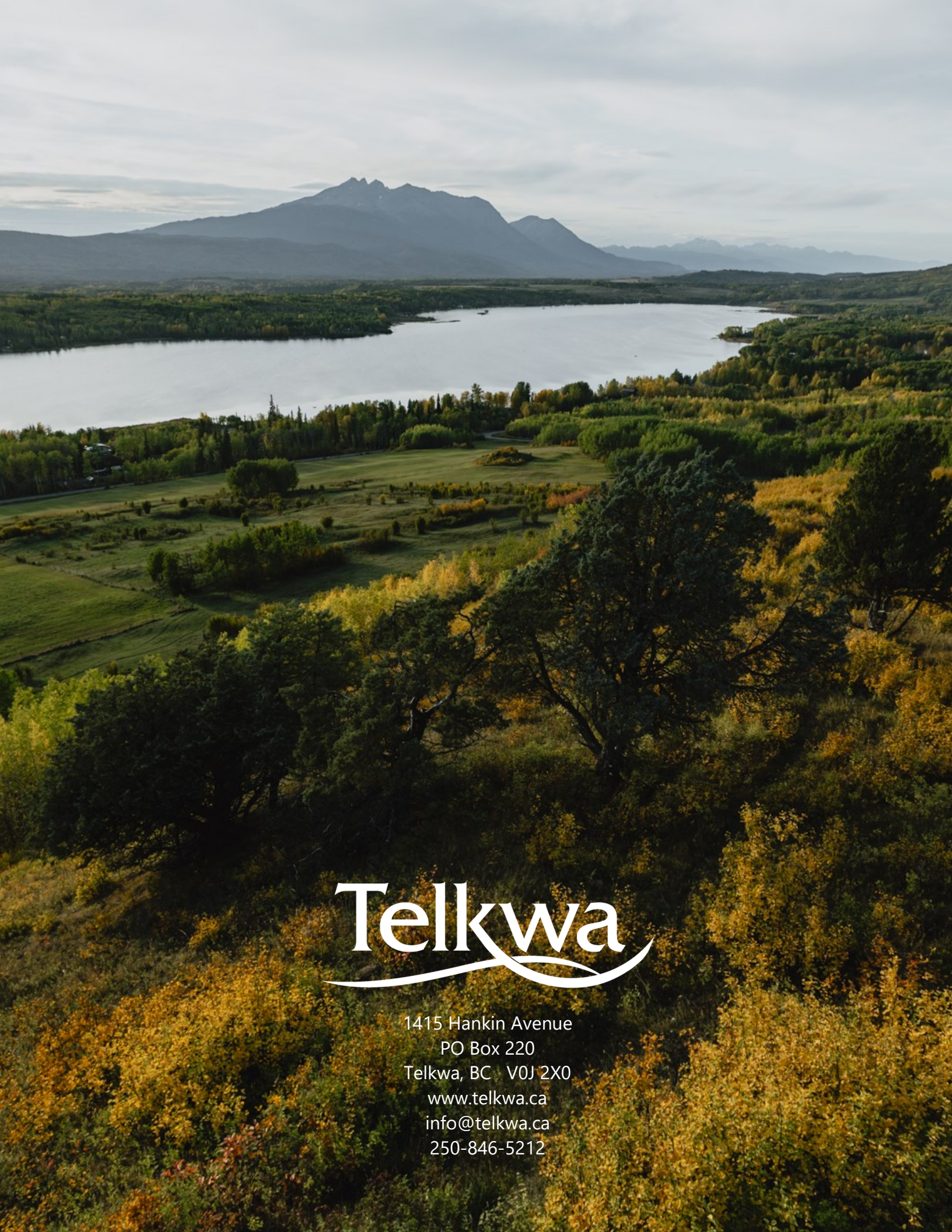
Bethel Reformed Church
Evangelical Free Church
Faith Reformed Church of Telkwa (T)
Jehovah's Witness Kingdom Hall
Mountain View Assembly
Smithers Christian Reformed Church
Smithers Baptist Church
Smithers Canadian Reformed Church
Smithers Seventh-Day Adventist Church
Smithers United Church
St. James Anglican Diocese of Caledonia
St. Joseph's Parish
Telkwa Community Church (T)
The Church of Jesus Christ of Latter-Day Saints

Sports Clubs

Bulkley Valley Archery Club
Bulkley Valley Backpackers Society
Bulkley Valley & Telkwa Pickleball Club (T)
Bulkley Valley Soccer Society
Bulkley Valley Tennis
Bulkley Valley Wrestling Club (T)
BV Disc Golf Association
BV Otters Swim Club
Shogun Dojo Martial Arts
Smithers Curling Club
Smithers Figure Skating Club
Smithers Judo Club
Smithers Junior Golf
Smithers Junior Softball
Smithers Minor Hockey
Smithers Saltos Gymnastics Club
Smithers Ski & Snowboard Club
Smithers Ultimate Frisbee
Tyhee Lake Dragon Boating (T)

Youth

Bulkley Valley Youth Sport Foundation
Scouts Canada
Smithers Recreation Programs



Telkwa

1415 Hankin Avenue
PO Box 220
Telkwa, BC V0J 2X0
www.telkwa.ca
info@telkwa.ca
250-846-5212